



Mistra C2B2
Co-Creating
Better Blue

Mistra Co-Creating Better Blue (C2B2)

A research programme for a sustainable
governance of the Swedish blue economy



Rising expectations ...



Fossil free energy transition



Food security



Effective mobility and transport



Good environmental status



And more...

C2B2 LivingLabs

The C2B2 LivingLabs are innovation experiments in real life settings in Sweden, made up of actors across multiple sectors and governance levels in marine environments and interested in marine spatial planning.



C2B2 LivingLabs

Sometimes at sea, mostly on shore.

Workshops online and on-site.

Stakeholders with different interests – Joint vision?!



LL North, 2 April:
Launch in *Luleå*!

LivingLab
North



LivingLab
East

LivingLab
West

LL West, 12 May



Göteborgs
Stad

LL East, 15 May



REGION
BLEKINGE

C2B2 LivingLabs

Sometimes at sea, mostly on shore.

Workshops online and on-site.

Stakeholders with different interests – Joint vision?!



C2B2 LivingLabs

Sometimes at sea, mostly on shore.

Workshops online and on-site.

Stakeholders with different interests – Joint vision?!



The LivingLabs are the glue in C2B2.

Knowledge, data, solutions that exist or that are missing in the LivingLabs are addressed in the C2B2 pillars.

C2B2 Pillars

Pillar 2

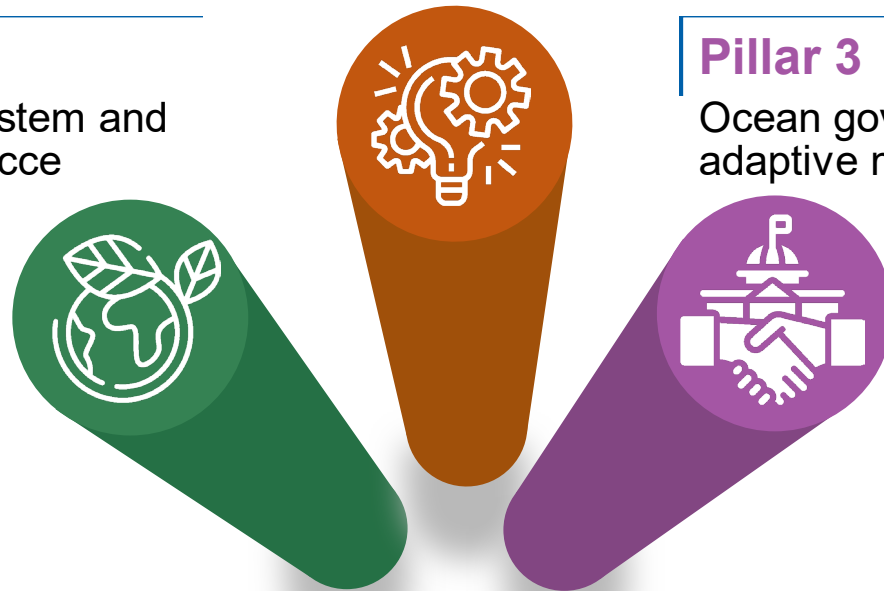
Open, data-driven innovation
& emerging technology

Pillar 1

Open ecosystem and
climate science

Pillar 3

Ocean governance &
adaptive management



The LivingLabs are
the glue in C2B2.

Knowledge, data,
solutions that exist or
that are missing in the
LivingLabs are
addressed in the
C2B2 pillars.

C2B2 Pillars

Alright, but who cares?

**From data to
knowledge to
decisions and action.**

Programme board



Robin Teigland,
Chalmers University
of Technology



”one of the challenges for research projects that want to achieve decisive changes in the blue economy as a whole is not to get stuck in too narrow a niche”

Mattias Rust
Government offices
Ministry of Infrastructure



Catarina Hedar,
Swedish Agency for
Marine and water
management
**Swedish Agency
for Marine and
Water Management**

”C2B2 is spot on. The holistic view on our ocean must be considered. We cannot afford to jeopardise or exclude any part”

Ewa Skoog Haslum,
Chief of the Swedish
Navy



MISTRA C2B2 PRESENTS
ONLINE BREAKFAST CLUB
INNOVATION TALKS

Eyes beneath the waves:
Monitoring marine biodiversity with underwater video

Host:
DIEWERTJE DEKKER, COMBINE
LAURENZ THOMSEN, UNIVERSITY OF GÖTHEBURG
Moderated by:
LUIZ SANCHEZ-HERES

Diewertje Dekker, Data Scientist at Combine, will present COMBINE's work on AI and citizen science, which has led to the development of SUBSIM - Sweden's platform for subsea image analysis.
Laurenz Thomsen, Professor in Marine Sciences at the University of Gothenburg, will present his and his colleagues' work on marine restoration and robotic monitoring.

Join the 45 minutes long seminar on Teams, click xxxxxx.

28 | 03 | 15
FRI 08.15

COMBINE
UNIVERSITY OF GÖTHEBURG

MISTRA C2B2 PRESENTS
ONLINE BREAKFAST CLUB
INNOVATION TALKS

...met,

... LivingLab


... LivingLab

... LivingLab

FUNDED BY


MISTRA C2B2 Co-Creating Partner Blue

Nyheter från C2B2
Mars 2015




Vindkraft ger längre rutter – kan öka utsläppen
Havsbaserad vindkraft kan skapa längre fartygsrutter för fartygsrutter och fartygen måste köra runt vindkraftsparkerna.

Redo för start på LivingLab North
Nu rigger C2B2 i tredje LivingLab i utvärderingsfas, LivingLab North med fokus på...



Redo för start på LivingLab North
Nu rigger C2B2 i tredje LivingLab i utvärderingsfas, LivingLab North med fokus på...



Marinchefen gick i
...

Institu

Swedis

University

SVENSKA MILJÖINSTITUTET

DELFT

Water Education under the auspices of UNESCO



Mistra C2B2
Co-Creating
Better Blue

Questions?

<https://c2b2.se>
LinkedIn: @mistra-c2b2